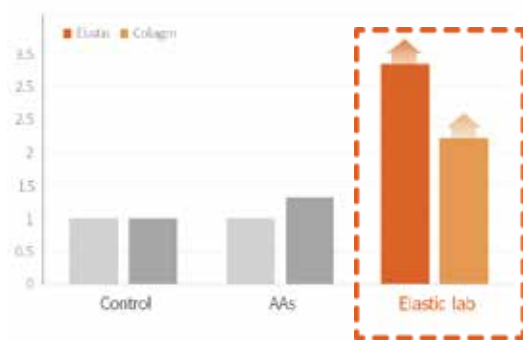


No. 1 Elastic care

Elastic Lab

Elastin Care ¹⁾

↑ 300% Elastin
200% Collagen



KR Registration Number: 1022268100000

Safe Formula

Intrinsic Ingredients

Glycine Proline Alanine Valine

Leucine Lysine HCl Copper Sulfate HA

Triple Action

Induce Elastin and Collagen

Activate Lysyl-Oxidase

Moisturize Dermal layer

1) Synergistic effect of copper and amino acid mixtures on the production of extracellular matrix proteins in skin fibroblasts, Molecular Biology Reports 48,3277-



Elastic Lab

Elastic Lab



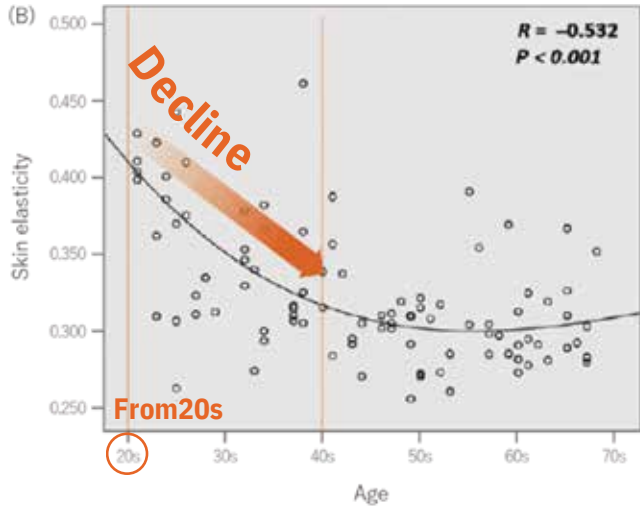
Skin Booster

Packaging: Box of 5 vials @3.3mL

Symbol of youth

Elasticity

Skin Aging Begins with Elasticity²⁾

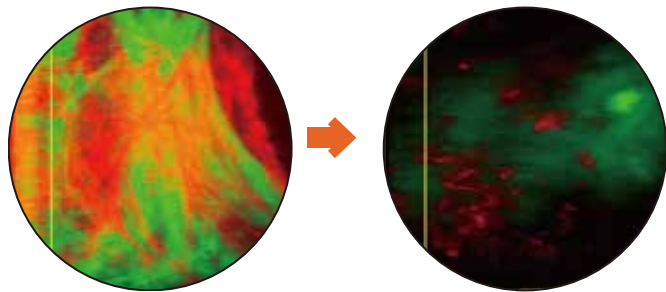


Loss of Elastin³⁾

Elastin
Collagen

YOUNG SKIN

AGED SKIN



“Elastin care” is essential

2) Age-related biophysical changes of the epidermal and dermal skin in Korean women. *Skin Res Technol.* 00:1-8 (2019) 3) *Cosmetics* 1(3), 211-221 (2014)

Improved

23.4% Elasticity⁴⁾

7.3% Thickness

12.5% Density

14.3% Moisture

Skin Texture

Pore size

Redness

Fine lines

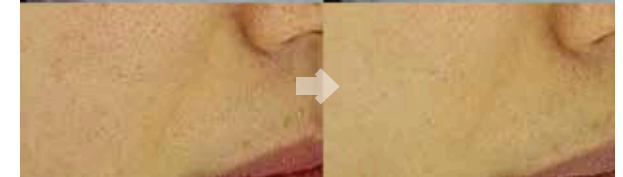
1~ 2 weeks, 3 to 5 session

4) Evaluation of the efficacy of an elastin inducing composition containing amino acids, copper, and hyaluronic acid: results of an open single center clinical trial study, *Cosmetics*, 9, 51. (2022)

Skin Texture, Fine lines

Redness

Pore size



No.1 Elastin care

Elastic Lab

Scalp Elastin Care

300%
ECM protein

ECM protein expression¹⁾
increased up to 300%

200%
Anagen hair

Anagen hair increased²⁾
up to 200%

185%
Keratinocyte

Keratinocyte DNA expression³⁾
increased up to 185%

125%
Cell viability

Cell viability increased⁴⁾
up to 125%

Safe Formula

Intrinsic Ingredients

Glycine

Proline

Alanine

Valine

Leucine

Serine

Arginine

Lysine HCl

Copper Sulfate

HA

1) Synergistic effect of copper and amino acid mixtures on the production of extracellular matrix proteins in skin fibroblasts, Molecular Biology Reports 48,3277-3284(2021)

2)The biology of hair follicles, The New England journal of medicine, 12 Aug 1999

3)l-serine potentiates the mitogenic effects of growth factors on cultured human keratinocytes, Journal of Investigative dermatology, February 1987.

4)In Vitro Hair Growth Promoting Effect of a Noncrosslinked Hyaluronic Acid in Human Dermal Papilla Cells, Hindawi, 31 October 2021



Anti-Hair loss with Scalp ECM care

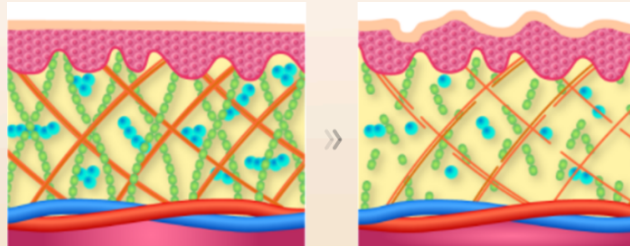
Elastic Lab H[®]

Dual action: Anti hair loss & Hair growth

Causes of hair loss

Hair loss caused by genetic factor, hormonal dysfunction, inflammation, and aging of scalp EMC proteins.

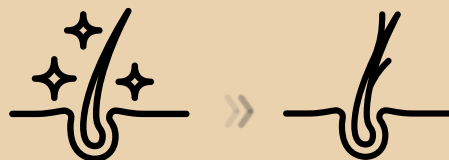
As EMC aging, the elasticity of the scalp decreases, resulting in hair loss.



- Elastin skin elasticity
- Collagen skin structural support
- Hyaluronic Acid moisturize skin

Dry and stiff scalp also leads to

a decrease anagen hair and an increase telogen hair



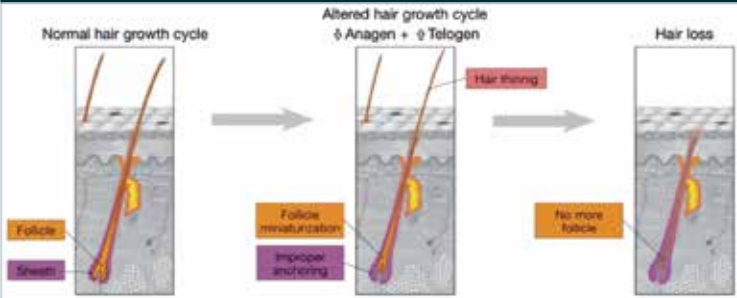
Elastic Lab



Packaging: Box of 5 vials @3.3ml

Symbol of youth
Elasticity

Hair Loss From Scalp Aging



Normal hair

ECM proteins integrity

No hormonal dysfunction

No inflammation

Hair loss

Loss of ECM proteins renewal (Elastin, Collagen) → & Follicle size reduction & loss of hair anchoring

↑ DHT: Shortens anagen phase → Miniaturization of follicles

Inflammation → Disruption of hair cycle

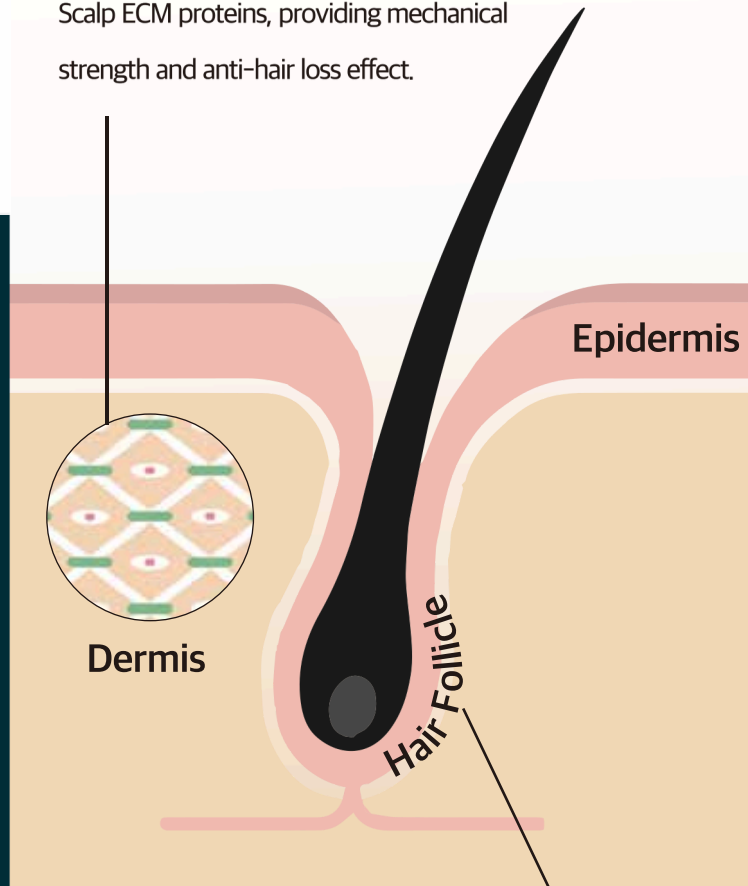
“Elastin care” is essential

1) A new strategy to modulate alopecia using a combination of two specific and unique ingredients. J. Cosmet. Sci., 64, 45-58, (2013)

Dual Action

Anti Hair Loss

Patented formula induces biosynthesis of Scalp ECM proteins, providing mechanical strength and anti-hair loss effect.



Promote Hair Growth

Nutritional Amino acids (Arginine),
(Serine & Hyaluronic acid) promote hair growth,
hair cycle regulation, and cell activation.

Improved

Male/Female Pattern

Stress-Related Hair Loss

Diet-induced hair loss

Age-Related Hair Loss

For All Types Of Hair Loss



2 weeks, 5 session

SPECIAL

The Answer to Various Skin Concerns, Not Just Bruises

| Heat Rash



| Acne



| Wart



Elastic
Lab

No.1 Elastin Care

Elastic Lab

YESKIN⁺

Dr. Yes Skin All

FORTE



AntiBruise

After a cosmetic procedure, it quickly soothes bruises, helping you return to your daily life sooner.

Why Do Bruises Last So Long?

A bruise forms when a physical impact ruptures subcutaneous blood vessels, causing blood to stagnate in the tissues. This stagnant blood clot is what we know as a 'bruise'.

Is it okay to just leave bruised skin alone?

Bruised skin should not be left alone, as it slows healing and worsens irritation. Dr. Yeskinall gel helps bruises fade faster while also soothing redness and swelling after procedures, restoring the skin to a healthy balance.

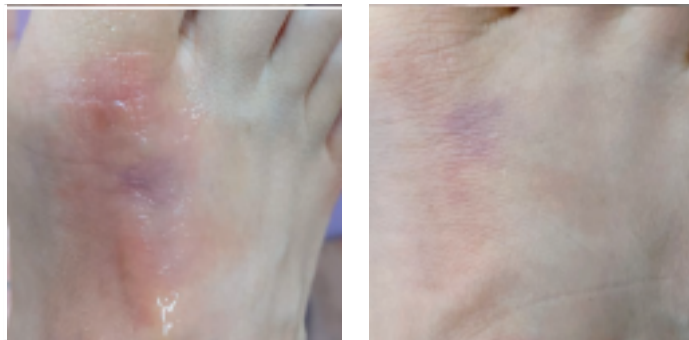
Dr. Yeskinall gel's Solution

Dr. Yeskinall gel focuses on this fundamental problem of 'impaired circulation' to help your bruise heal faster.

A case of bruising



"Innovation That Erases Bruises"



| After applying it 4 times at intervals of 2-3 hours



| After applying it twice a day for 3 days

Copyrights 2025 All rights reserved by Elastic Lab Inc.

3 Key Mechanism



| Lymphatic Circulation Activation

It rapidly expels stagnated fluid and waste products from the bruise, alleviating swelling and quickly lightening the bruise's color.

| Creating a Skin Recovery Environment

It contains plant-derived antimicrobial substances to reduce the risk of secondary infection and manages inflammatory responses, providing an optimal environment for skin recovery.

| Accelerating Tissue Regeneration

Its anabolic-inducing ingredients promote the synthesis of collagen and elastin in the damaged area, supporting rapid tissue recovery.

Efficacy Proven by Scientific Experiment

(Pig Skin Bruise Model Test)

